

VERDANT
STUDIO

art • architecture • interiors • research

RESIDENTIAL PORTFOLIO

Verdant Studio designed homes embody functional elegance. We embrace the natural elements to create beautiful and livable spaces filled with light and air.

The role of an architect is to harness creativity. We start with a detailed discovery process to uncover the practical and stylistic elements that are best suited to your project needs and goals. Our residential portfolio spans multiple geographies and architectural styles - reflecting the communities we serve.

CREATING PLACES PEOPLE LOVE



MEET YOUR TEAM

DESIGN LEAD



JESSICA HESTER AIA | LEED AP | NCARB CEO + PRINCIPAL ARCHITECT

A native of Northwest Arkansas, Jessica loves shaping the built environment in ways that elevate the quality of life for the many communities Verdant Studio serves. A Placemaker at heart, she is a licensed Realtor and an active member of the NWA chapter of the Urban Land Institute focused on building a Women's Leadership Initiative. In the studio, she thrives at the collaborative intersection of research, analysis, design, and technical expertise.

After graduating from the University of Oklahoma with a Bachelor of Architecture she earned a Master of Science in Design Research at the University of Michigan's Taubman College of Architecture and Design. She co-founded an architecture practice in Rome, Georgia selling that in 2016 to return Northwest Arkansas. After a brief stint as the University of Arkansas Community Design Center's staff architect, she founded Verdant Studio.

Jessica's creative entrepreneurial vision is driven by her love of critical thinking, organizational management, and the communication strategies necessary to deliver superb, on-budget solutions for Verdant Studio's clients. Jessica is a registered architect in Arkansas and Oklahoma and her professional affiliations include the American Institute of Architects (AIA), The National Association of Realtors, The Urban Land Institute (ULI) - NWA Board Member, and the Congress for New Urbanism.

When she's not at the office you can find her on the back porch with her dog Lucy, drinking wine and listening to folk music, or cooking dinner with her husband Chris.

PROJECT LEAD



WENDY STATEN RESIDENTIAL PROGRAM MANAGER

Wendy built her first architectural model as a sixth-grader, and she's been fascinated with buildings ever since. A native of Northwest Arkansas, she has also called the Rocky Mountains, Idaho, Alabama, the Washington, D.C. metro area, and historic Savannah, Georgia home. She earned her Masters Degree in Architecture with an emphasis in urban design and architectural history at Savannah College of Art and Design. While studying there, she fell in love with historic buildings and all things art history.

Wendy has had the opportunity to work on projects ranging from schools, libraries, and residences, to federal buildings including National Archives facilities. Before joining Verdant Studio, she worked for a firm specializing in residential design and has 17 years of residential design experience. Wendy served as an adjunct art faculty member at Northwest Arkansas Community College from 2006 to 2020, and still finds it fulfilling to share the wonders of the visual art world with young learners.

Wendy's hobbies include reading, running, painting, and coaching whichever activity her children are participating in at the moment. She lives in Bentonville with her husband, three of their five children, and a significant collection of pets.



Verdant Studio is founded on conversations designed to bring ideas into reality. We maintain conversations with our clients, conversations among our own expert creative teams, conversations with stakeholders and communities, and conversations with the history of art and architecture, all with the goal of delivering efficient, practical, on-budget spaces, places, and images that people love.

Through our multidisciplinary studio approach, we are a national innovator and thought leader in placemaking. We firmly believe that the more voices you have the better your creative thinking and ultimately, your solutions.

Our workspace is designed to maximize the interchange of ideas, facilitate creative research and problem-solving, and accommodate efficient, well-organized production.

THE TEAM



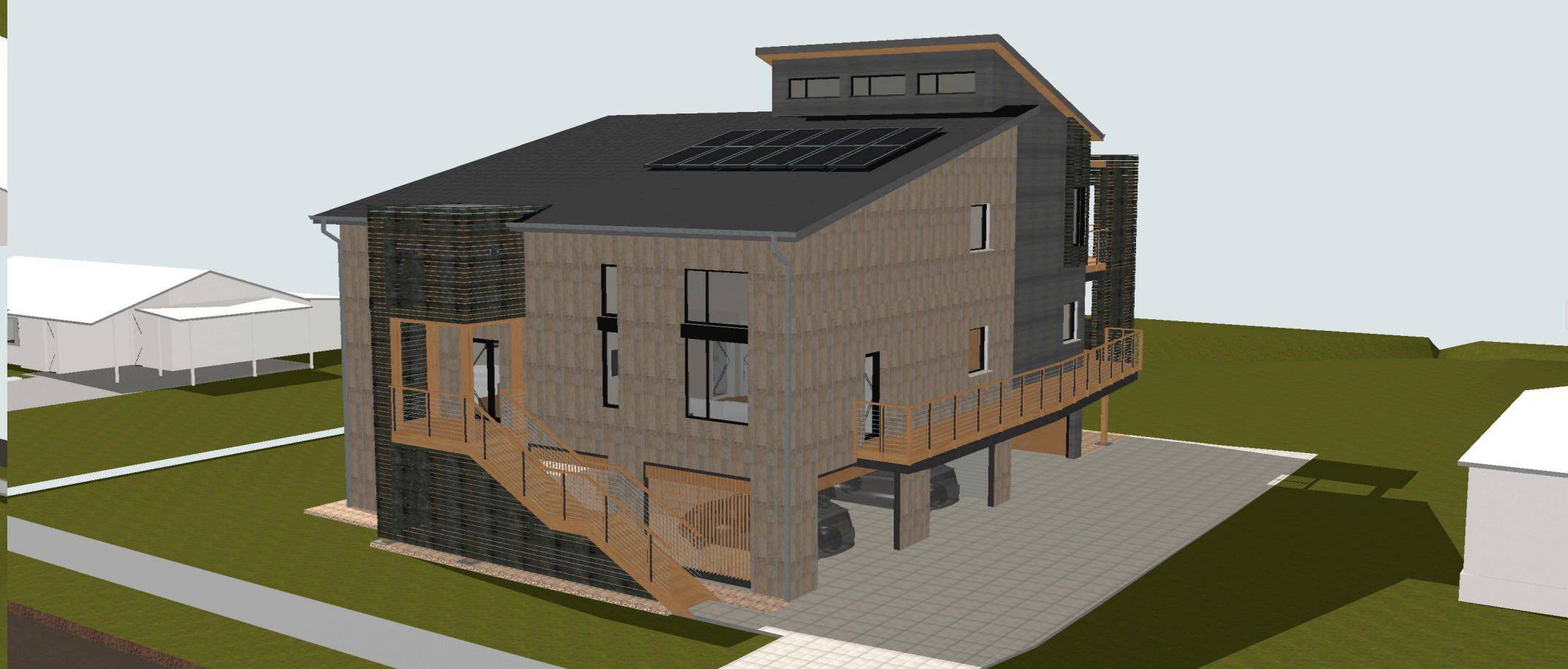
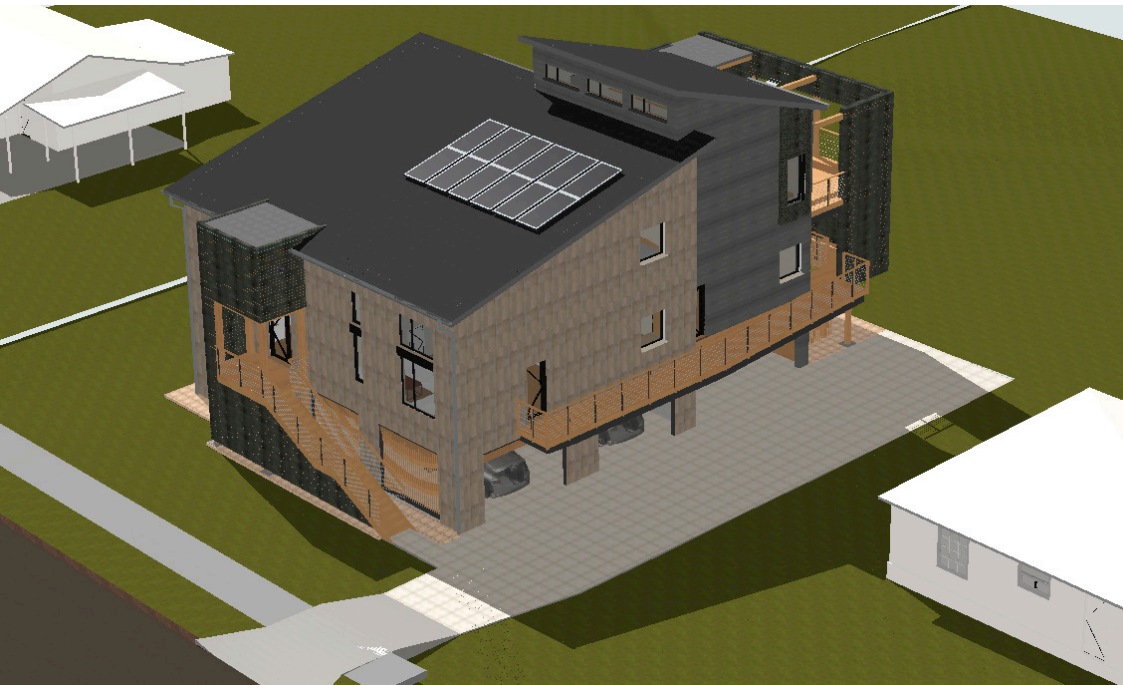
VARDA HOUSE

The Varda House is a link between the two natural landscapes of Iceland, the earth and the sky. The Varda House uses its relationship with the land to frame the Aurora Borealis of the northern sky. The Varda and the early Icelandic turf house are referenced as they are two traditional man made features within the natural landscapes of Iceland. Used as a form of way-finding, the Varda are stacks of volcanic stones in the landscape that create artificial land points to follow during limited visibility and weather conditions, while the turf houses are semi-buried structures that use the insulation qualities of the local and natural materials to provide shelter from the Icelandic climate. The combination of these two precedents provide the Varda House a unique opportunity to become a contemporary way point to the sky above.



CAJA RESIDENCE

Designed to be the first Passive House certified building in Arkansas, this home takes on the challenge of multi-generational living, while meeting the rigorous standards PHIUS provides for healthy, sustainable living. This residence grows with its family consisting of two separate dwelling units with a studio loft attached. While meeting the needs for the future of the family, the Caja Residence provides an opportunity for the public to come and stay for a short visit to better experience and understand the benefits of a Passive House building. Every design feature is made to meet the needs of both the intensive certification and the family that will reside there. The openings and angles are calculated for



AVERIE ESTATES

Averie Estates is a community of diverse luxury estate homes that are unified in a neighborhood setting while providing sophisticated rural living. Among the unique styles, the transitional modern home featured here features clean lines, bold contrasts in tone, and simplified interior features.



**AVERIE ESTATES
CONTINUED...**



AURORA CLUBHOUSE

This project is a concept design for a neighborhood clubhouse - it includes a gym space, restroom facilities, a community gathering space and a roof deck. Designed to support a multitude of homes in the surrounding neighborhood, this clubhouse takes on a more modern design to become an icon in its contemporary residential development. The board-form concrete wall disects the building separating the every-day use facilities from the more social spaces, while still maintaing an easy flow throughout the spaces.



WHITAKER ADDITION

This modern addition to an early 20th century Prairie Style home features a new great room and owner's suite connected with a glass bridge to the original residence. This intentional construction joins the historic with the new through a neutral transition and juxtaposes alternative architectural styles in an effort reduce visual competition with a prominent piece of architecture while adding functional space for the owners.

The original residence was designed by a Fay Jones apprentice and features a square floorplan, something characteristic of the Prairie Style, an architecture style popularized by Frank Lloyd Wright in the early 1900's. In Prairie Style architecture, the 'entry' sequence is an important element of the design; we reengaged with this feature, creating an experience surrounded by nature that bisects both the historic and the contemporary.



RYAN WILLIAMS RESIDENCE

The Ryan Williams Residence is currently under the design process. The goal for this project is to design a modern home that utilizes the abundant site it sits on for opportunities to blur the lines between built and natural form. The tall ceilings and large windows open up the interior spaces while gaining natural light and incredible views. The home-owner's niche program needs are met through adapting typical home spaces for the use of potential future owners to fit the lifestyle of the current owner. The owner's intention is to incorporate his business within his home, so we created spaces that are easily accessible to the public without diminishing the privacy of his personal spaces. The form speaks to that function in that this home is a conglomeration of spaces that meet different needs at different times. They revolve around the main open space that rises above them all. The sloped roofs identify the spaces that suit the more residential needs while the block forms represent the more industrial/business needs of the house.

